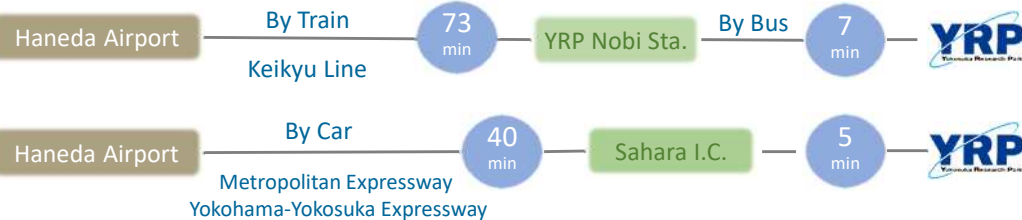


Directions to YRP



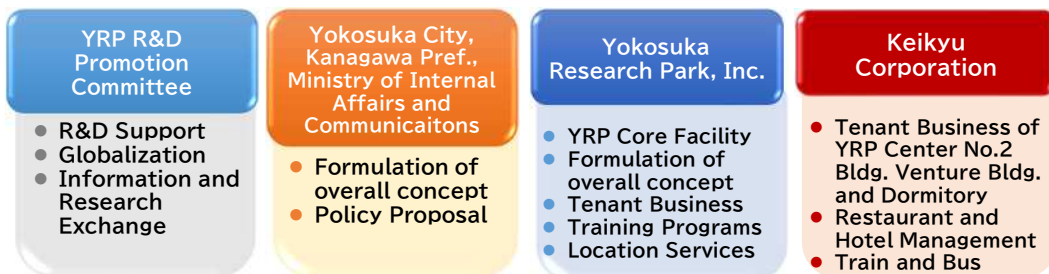
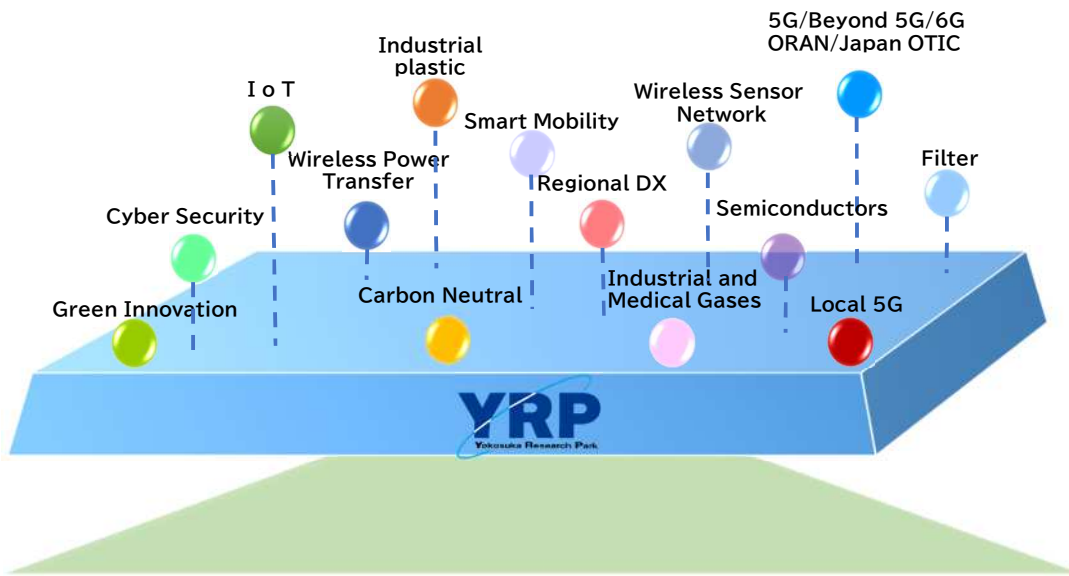
Yokosuka Research Park

YRP - Creating new value

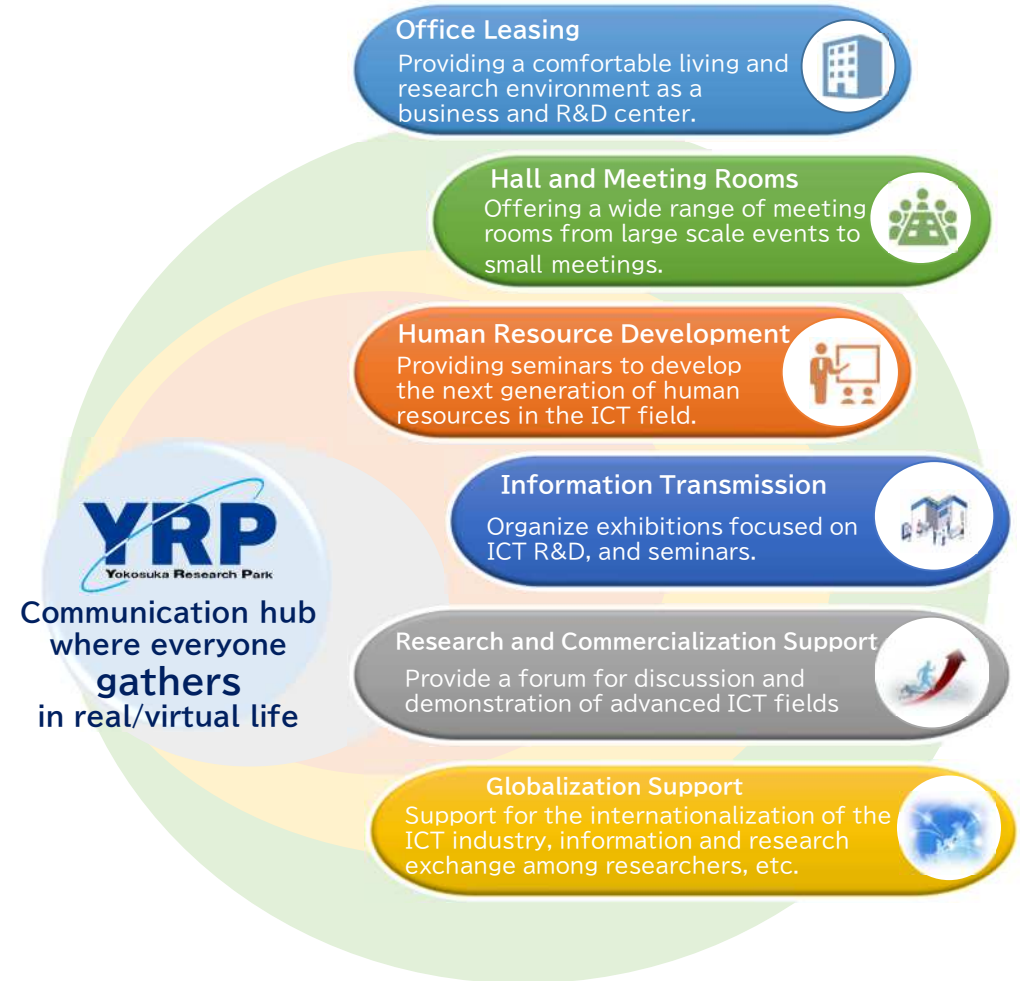


Four parties cooperate to support the development of YRP and the business activities of all YRP members.

YRP was established by Yokosuka City, Keikyu Corporation (Railway company), and the Ministry of Internal Affairs and Communications on a hillside adjacent to the NTT Yokosuka R&D Center in 1997. Yokosuka City and Keikyu Corporation are responsible for the overall infrastructure, while Yokosuka Telecom Research Park, Inc., the semi-public company funded by Yokosuka City and others, is responsible for formulating the overall concept of YRP and the management and operation of the core facility of the area, YRP Center No.1 Building. Research activities are promoted by YRP R&D Promotion Committee and its members in cooperation with the Ministry of Internal Affairs and Communications and Yokosuka City.



Enabling new business activities, business creation, and human resource development



Subsidies by Kanagawa Prefecture and Yokosuka City

Contact Kanagawa Prefecture

Enterprise Attraction and International Business Division, Industry Department
TEL:045-210-5573、045-210-5574

Contact Yokosuka City

Business and Industry Promotion Division, Economy Department TEL: 046-822-8125

The Kanagawa Prefecture and Yokosuka City business attraction programs are available for those wishing to locate in YRP.



Welcome to YRP! Easily accessible from/to Tokyo, the area is rich in nature surrounded by sea and greenery on Miura Peninsular. Life in Yokosuka is full of attractions and fun, including marine leisure, hiking, visiting historical sites, food, and more!



Working in YRP! Staying in Yokosuka!

Seasonal flowers and fresh greenery will offer you refreshing time.



Autumn leaves coloring the bus route

Year-round fun
Marine leisure



A 10-kilometer promenade
"Umikaze no michi"
(path of the sea breeze)

Sightseeing, historical remains, and gourmet foods unique to Yokosuka



Yokosuka Military
Port Tour



Sarushima, the
only natural island
in Tokyo Bay



Yokosuka Navy Burger
& Yokosuka Navy Curry

YRP is a research and development center of approximately 60 hectares (approximately 2 km east to west and 500 m north to south, or about 1.2 times the size of the Tokyo Disney Land), where public research institutes, leading companies from Japan and abroad, and university laboratories are concentrated. The café-restaurant and the hotel in the area are open to all visitors. The café-restaurant and the hotel in the area are open to all visitors.



Tenant Building

Commercial Facilities

① YRP Center No. 1 Bldg.



Total floor area: 14,850m²

② YRP Center No. 2 Bldg.



Total floor area: 7,572m²

③ YRP No. 3 Bldg.



Total floor area: 7,572m²

④ YRP Venture Bldg.



Total floor area: 4,051m²

⑤ YRP No. 5 Bldg.



Total floor area: 20,305m²

⑥ Bachelors Dormitory

Heim Hikarinooka 2
Heim Hikarinooka 3



① Keikyu EX Inn Yokosuka Research Park

② Café Restaurant "Roseteria"



Company Building

① NTT Yokosuka R&D Center



② Air Liquide Japan Ltd. Tokyo Innovation Center



③ Alpha Systems Inc. YRP Alpha Techno Center



④⑤ NTT DOCOMO R&D Center Bldg. No.1 & No.2



⑥⑦ NTT DOCOMO R&D Center ANNEX-R/L



⑧ TELEC Yokosuka Research Center



⑨ NEC YRP Technical Center



⑩ Yazaki Research and Technology Center



⑪ Nifco Head Office



⑫ Nifco Technology Development Center



⑬ YAMASHIN-FILTER CORP. Yokosuka Innovation Center



⑭ V Technology Co., Ltd. YRP Innovation Center

